

15 Cell Sleeve & Tray Tree Propagation System for 80mm (3") Diameter Ellepot®

Pistachio - Shrub Liners - Fruit Trees - Woody Ornamentals - Almond - Nuts - Landscape Trees - Grapes



This product includes the latest design features to ensure an incredibly natural root system and the very best plants possible.

The sleeves support the Ellepots® in the early stages and prevents them drying out too fast. The design allows enough air movement for great aeration and drainage and fantastic 'air pruning' of the root system.

Made in USA



Super long-life injection molded plastic
- Very strong while remaining lightweight.

Sleeve holds 8" deep Ellepot® and tray holds 4" deep Ellepot®
- Supports the Ellepot® and the developing root system in the early stages and prevents premature drying out.
- Allows enough air movement for great aeration / drainage & fantastic 'air pruning' of the root system.

Sleeves can be lifted out individually for grading, trimming, grafting, spacing etc
- Without touching or damaging the Ellepot® or roots.

Easy sterilization
- Unlike blow molded or thermoformed pots, injection molded trays will take higher temperatures with no negative effects on the product's life.

Ideal for mechanization
- Future-proof design that is ideal for both traditional nurseries and modern purpose built facilities incorporating mechanisation.

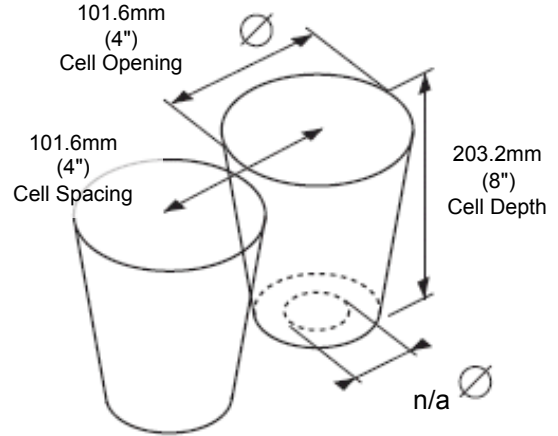
More specifications overleaf



Tray Specification

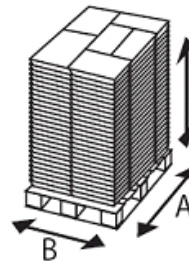
Description	Imperial	Metric
No. Of Cells		15
Tray Length (at top)	20.98"	533 mm
Tray Length (at bottom)	20.98"	533 mm
Tray Width (at top)	11.97"	304 mm
Tray Weight	2.94"	1333.56 g
Plant Density	9.00 pl/ft2	96.9 pl/m2
Cell Volume	n/a	n/a

Cell Dimensions (Pot/Sleeve)



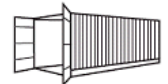
Shipping Statistics - Trays

Description	Imperial	Metric
Trays per Pallet	176	Pots: 3600
Trays High per Pallet	22	Pots: 30
Pallet Height	101.42"	2576 mm
Pallet Width A	43"	1092.2 mm
Pallet Width B	43"	1092.2 mm
Pallet Weight	567.38 lb	257.41 kg



Shipping Statistics - Containers & Trucks

	Pallets	Trays	Weight (lb)	Weight (kg)
40ft Hi Cube Container	20	160	470.4 lb	213.37 kg
53ft Truck Capacity	28	4928	15886.64 lb	7207.38 kg



Specifications have been rounded for clarity and ease of calculation

